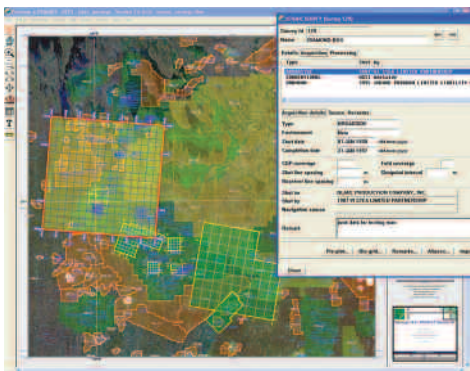


Petrosys Creates Flexible Mapping Applications

When you choose Petrosys, you get to tap into all the best data sources to find the information you really need. It's all about greater productivity, because Petrosys helps you produce better maps, more quickly.

An international provider of information systems and services to the petroleum exploration and production industry, Petrosys creates sophisticated, flexible mapping applications with links to a wide range of more specialized third party systems, including PPDM databases. The exceptional capabilities and sheer ease of use of its software make it an essential part of the workflow for many of the world's most successful energy firms. Available for Windows, Linux and Solaris computing environments, Petrosys software allows you access to your valuable information in a broad range of data sources such as OpenWorks, GeoFrame, PPDM, SMT, Finder, ArcSDE and Oracle.



A PPDM member since the mid-1990s and an active contributor to the PPDM industry standard, Petrosys supports a range of PPDM versions including 3.7, the latest commercially available version. Petrosys also has the flexibility to support hybrid implementations for those clients who need to tailor the PPDM implementation to meet their business needs.

“There is a push from a range of exploration and production companies to expect that vendors are compliant in a meaningful way with industry standards like PPDM. As a software vendor, it makes sense for us to honor what customers want,” says Petrosys Marketing and Sales Manager, Scott Tidemann. “We are constantly trying to predict and react to market needs to evolve the product. And industry standards offer us one opportunity to learn from, and contribute to, a broad industry knowledge base that comes from different, practical viewpoints on how data management and information technology systems should evolve. Ultimately, this provides our product with a broader appeal.”

Petrosys is an active promoter and supporter of the establishment of PPDM as an organization with a presence in the Asia-Pacific-Australia region — an important factor in the internationalization of the PPDM association. “When vendors

and oil companies actively collaborate with industry standards, it makes for a stronger and more practical organization, and outcomes,” Tidemann says.

PPDM Integration and Services

Petrosys allows you to add the full power of an E&P industry standard relational database to the spatial querying, analytic, and presentation facilities of the Petrosys suite. Petrosys, which connects to PPDM model databases running in a relational database environment, supports on-site configuration of the database interfaces that link actual PPDM databases to the Petrosys environment, as well as on-site tailoring of the query and editing screens to reflect specific business needs.

The structured environment of a relational database helps to ensure that your well, seismic, lease and other E&P information is not only stored securely, but has also been checked, documented and indexed as a corporate knowledge resource that can be shared independently of applications and across an entire organization. A secure, centralized repository for your valuable data assets means that you can:

- Organize your information
- Describe the structure
- Validate cross references
- Track changes
- Provide querying, reporting and data selection
- Link information across major data types
- Manage wells
- Manage seismic
- Manage leases
- Manage physical assets
- Manage pipelines and other spatial objects
- Link to existing databases
- Disseminate knowledge
- Manage data security and confidentiality
- Ensure data longevity.

Petrosys Helps You Organize Your Information

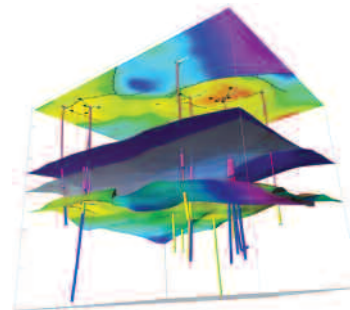
By loading your information into a PPDM data model, as accessed and maintained by the Petrosys database module, you add immediate value by describing more closely the data and relationships within it. General well information, such as elevation references that are the key to all subsurface depths and volumes, become precisely defined — enabling you to track the source of most information to allow identification of potential data entry problems.

Querying, Reporting, Mapping, 3D Visualization, and Surface Modeling

You can bring up wells, seismic surveys and lines, lease outlines and other information live on screen. Once you have identified an object,

you can call up general information, such as a well header, using a range of user interfaces.

You can use map areas, data content, and user defined queries to build up lists of objects such as wells or seismic lines, then run queries and reports to provide further information.



Above: 3D View showing PPDM wells and zones in context of computed surfaces. Left: Map showing 3D seismic survey information displayed from PPDM 3.7 Database. The user can browse and maintain the details of the survey information.

Disseminate Knowledge Effectively

A PPDM/Oracle data store provides an effective mechanism for disseminating information within and across teams and locations. The data store and widely supported accessing mechanisms allow a broad range of third party software to use your E&P information, without locking you into one software vendor. Petrosys can also provide the technology and implementation assistance to spatially enable PPDM modules, making these modules instantly available to GIS applications like ArcSDE and MapInfo, as well as Petrosys itself.

Create a Living Data Store

Just as hard copy deteriorates over time, digital information will eventually become inaccessible due to changes in storage technology and software version access. Managing information in a well-documented relational data store, based on industry standards will create a living data store that is updated in line with evolving technology.

Services

If you haven't already started a PPDM data store, Petrosys can help you do so. The Petrosys database establishment service provides the systems and data management required to implement the database, create a support environment, and develop a program of data validation and loading. And if you've already started a PPDM repository and would like expert assistance, Petrosys consultants can help.

Contact Information

Petrosys
 Americas T 1.888.PETROSYS
 Europe T +44-141-420-6555
 Australia/Asia T +61-8.8227.2799
www.petrosys.com.au

**“I call this one Petrosys with ArcSDE,
PPDM and OpenWorks.”**

AHMED

Your First Name

“The Mapping Guru”

SALAH

Your Last Name



Petrosys works well with all the best databases. Very, very well.

No one mapping source alone gives you everything you need to create the quality of maps your business requires. That's what makes ours so ingenious. Petrosys works with all the others to create maps that are more meaningful, more relevant, more trustworthy, for having gone to the extra effort. And if that doesn't



spark your willingness to embrace change, there's this to consider: Mastering Petrosys is easy, and the gorgeous, precise maps you'll create with this sophisticated mapping program will not only wow your audience, but make you look awfully good in the process. Is this kind of flexibility appealing? Then call.