

IHS Enerdeq™ Desktop: The Future Of Access To Public and Proprietary E&P Data

If you're seeking a solution to improve your workflow, increase productivity, and allow easy integration of public and proprietary oil and gas data, look no further than IHS Enerdeq™ Desktop.

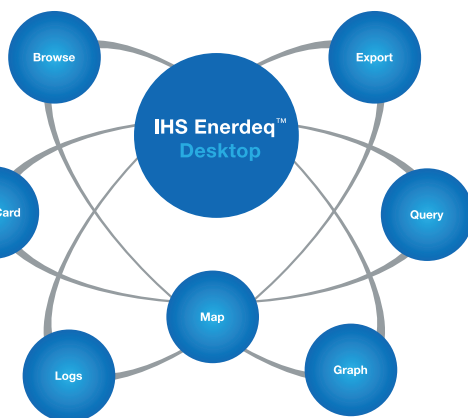
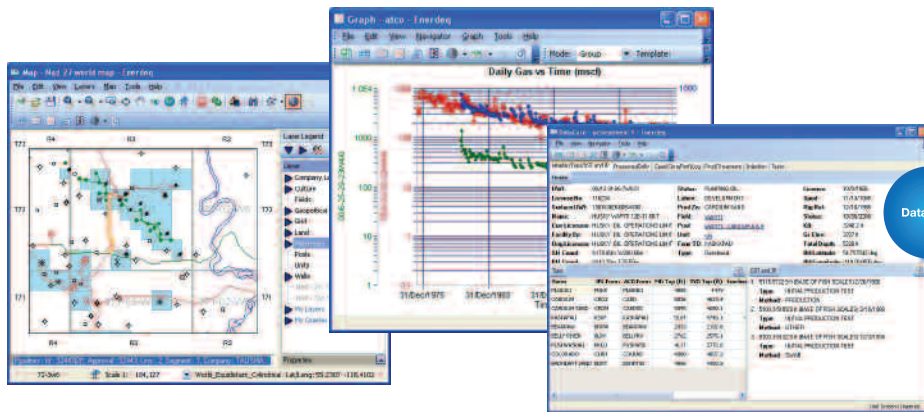
IHS Energy, a leading provider of oil and gas data and software, is leading the way with Enerdeq Desktop, a solution that enables users to be more productive today and well into the future. The next generation AccuMap,® Enerdeq Desktop builds on AccuMap's strengths as the software standard for mapping, querying and browsing public land, well, midstream, seismic and log data — and provides even greater value. Enerdeq Desktop takes AccuMap one step further, enabling users to address industry requirements with an innovative data management solution that integrates commercial and proprietary data in a way that is easy to implement, operate and

data from all these different sources and aggregating them, before they can do the real work of making decisions that change opportunities for the company," Forrest says.

The amount of oil and gas data is growing exponentially, but people don't have all the tools they need to aggregate that data. An IT solution such as Enerdeq enables the aggregation of important data that allows the end user to make faster decisions. What Enerdeq Desktop does, is provide a flexible solution for accessing and handling data from multiple sources, while at the same time decreasing the amount of manual data integration that's required. Enerdeq allows

Trident employees could make decisions. In addition, Enerdeq allowed employees to review the most recent production data for each well by viewing in-house production data alongside public production data. "With Enerdeq, they can always have a representation of the current situation of the field. That's a big value for our clients — to see all their data in one place," Forrest says.

Enerdeq has also brought significant benefits to the workflows at Process Engineering Ltd. "Enerdeq is more robust than other programs in the market, enabling our company to become more efficient," says Betty Comperen, RET at



maintain. Delivering increased functionality that will enhance your decision making and increase communication within your organization, Enerdeq can be deployed as a stand-alone package or on your network. It offers flexible access to both in-house and IHS data from one application, together with high performance analysis in an open and easy-to-use, Windows-based environment.

Designed to meet the needs of certain sub-groups of the AccuMap market, Enerdeq Version 1.1 was first released in Canada in December, 2005. The latest release, which took place last September, targets facility and production engineers, oil and gas marketers, shipping firms, pipeline contractors, regulatory workers, and investors. The next major release of Enerdeq Desktop, Version 1.2, is planned for August 2007 and will focus on the needs of mineral and surface land users (landmen).

According to IHS Enerdeq Desktop Product Manager, Jackie Forrest, IT systems that aggregate and analyze data on a real-time basis are becoming progressively more critical in increasing employee productivity and communication, enhancing decision making, and reducing errors. "People are spending too much time gathering

users to access data through a query tool that allows them to analyze data at any point in the process. Being able to move flexibly between modules means a more efficient workflow that helps users quickly analyze and extract data. "Higher productivity is the biggest advantage," stresses Forrest.

In addition to improved workflow and increased productivity, Enerdeq facilitates the integration of proprietary data and public data, which people need in order to make decisions. If you would like to view your proprietary data in the same environment, Enerdeq will aggregate the data for you — allowing you to solve problems much more quickly. "Having a tool that can do that for them saves them a lot of time."

IHS Enerdeq Desktop Version 1.1 helped Calgary-based coal bed methane producer, Trident Exploration Corporation, improve its workflow. A privately held firm, Trident was one of the first E&P organizations to deploy Enerdeq Desktop. Employees were able to integrate public IHS data with in-house Corporate Management System (CMS) data through the Enerdeq Desktop map; integrating CMS data and IHS public data in a spatial context increased the speed at which

Process Engineering. "What used to take hours, now takes under 15 minutes with Enerdeq's ease in exporting data."

To improve both your workflow and the bottom line, IHS Enerdeq Desktop provides the solution. IHS is committed to helping companies make the transition to Enerdeq Desktop.

IHS's strong focus on greater efficiency can also be seen in its support of the PPDM Association. IHS has been PPDM-based since the PPDM Association's inception, and this has allowed IHS and the business community as a whole to leverage the commonality of a model. "It ultimately allows people to be more efficient, because there is some consistency to the models that are out there," Forrest says. "We are a strong provider of oil and gas data and globally, we plan to continue to leverage the PPDM structure and will use it where it makes sense."

Contact Information

IHS Energy
 T (403) 770.4646
 F (403) 770.4647
www.ihs.com/energy

IHS Enerdeq™ Desktop

“Enerdeq Desktop is more robust than other programs in the market, enabling our company to become more efficient. What used to take hours, now can take under fifteen minutes with Enerdeq’s ease in exporting data.”

Betty Comperen
Project Manager,
Process Engineering Ltd.

Enerdeq is the next generation AccuMap® designed to integrate proprietary and public data sets, improve workflow, and increase productivity.



www.ih.com/energy
Call toll free 1 877 495 4473



The Source
for Critical Information and Insight™